

# VERITY® 1920 MS for Mass-directed Purification

Safely Isolate Added Value Molecules With High Yields  
And Purity With High Throughput Preparative LC



SPEC SHEET | PURIFICATION

VERITY 1920 MASS SPECTROMETER FOR VERITY HPLC SYSTEMS

- **PURIFY WITH CONFIDENCE**
- **STREAMLINE YOUR PURIFICATION WORKFLOWS**
- **WORKHORSE IN THE LABORATORY**

The single quadrupole VERITY 1920 Mass Spectrometer delivers high sensitivity and selectivity for reproducible fraction collection. Save valuable time and maximize productivity by combining the power of mass detection with the fraction collection options offered by VERITY® HPLC preparative systems.



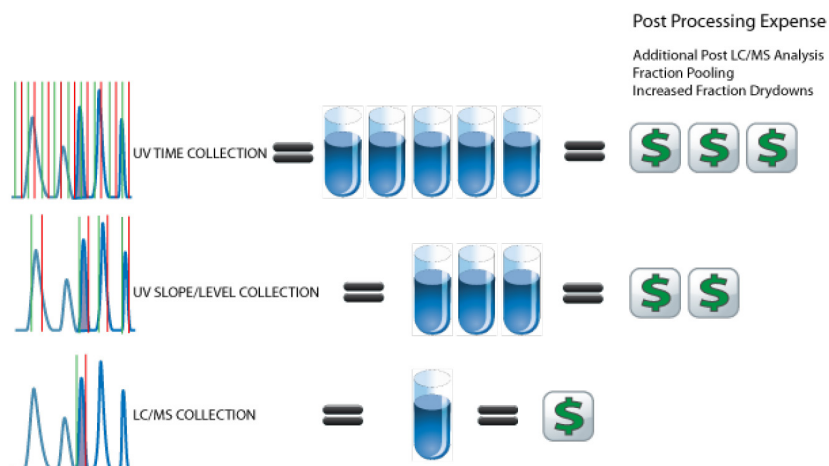
Figure 1

VERITY® 1920 Mass Spectrometer

## TARGETED MASS PURIFICATION BENEFITS

By combining multiple signal sources, such as UV-VIS and mass data from the VERITY 1920 Mass Spectrometer, purification workflows are greatly improved:

- Only targeted compounds are collected, reducing the number of fractions and post-processing costs
- Low UV absorptive compounds can be collected with high sensitivity and selectivity
- Improve fraction purity for co-eluting compounds in association with conditional fraction collection
- In real-time, get fraction spectra to identify which tubes your compounds of interest have been collected in



## VERITY® HPLC SYSTEMS: GET AUTOMATION AND EASE-OF-USE WITHOUT COMPROMISING QUALITY

- Single point of control via TRILUTION® LC Software
- Open access for system sharing
- Analytical to preparative injection options
- Modular systems with large bed injector-fraction collectors
- Conditional logic collection up to eight data channels
- Real-time spectra of the fractions collected
- Flexible applications through variables
- Easy-to-use drag-and-drop task options



**Figure 2**

VERITY® 281 LCMS System

## VERITY® 1920 MASS SPECTROMETER SPECIFICATIONS

### VERITY® 1920 MASS SPECTROMETER SPECIFICATIONS

Part Numbers: 18105000 (110V), 18105001 (120V), 18105002 (100V)

Specification	Description
Type of Mass Detector	Single Quadrupole
Mass Range	10-2000 m/z
Scan Speed	10,000 m/z sec <sup>-1</sup>
Sensitivity (ESI+ @ 10pg reserpine)	100:1
Mode	Positive and/or negative ESI Positive and/or negative APCI
Accuracy	± 0.1 m/z
Resolution	± 1 m/z
Dynamic Range	4.5 orders of magnitude
Vacuum Pump	Two-stage, oil-sealed, sliding-vane vacuum pump (Edwards RV12)
Gas Supply	4.1-6.9 bar (60-100 psi) > 98% pure Nitrogen < 8 L/min - Practical 5 L/min
Power Consumption	600 VA maximum
Dimensions (L x W x H)	56 x 28 x 66 cm (22 x 11 x 26 in.)
Weight	32 kg (70.5 lbs.)

### VERITY® 1920 MASS SPECTROMETER SPLITTER SPECIFICATIONS

Specification	Description
Type	Active splitter and make-up pump controlled by Gilson software
Split Ratio	Selectable from 1:100 to 1:100.000 for flow up to 100 mL/min
Make-up Pump	VERITY® 3011 Isocratic Pump with 5SS pump head
Make-up Flow	0.001-5 mL/min
Make-up Flow Precision	< 1% RSD with water at ambient temperature and pressure at 1.4-600 bar (20-8700 psi)